
TOWN OF YORK

LAND USE, ENVIRONMENT, & VISION





AGENDA

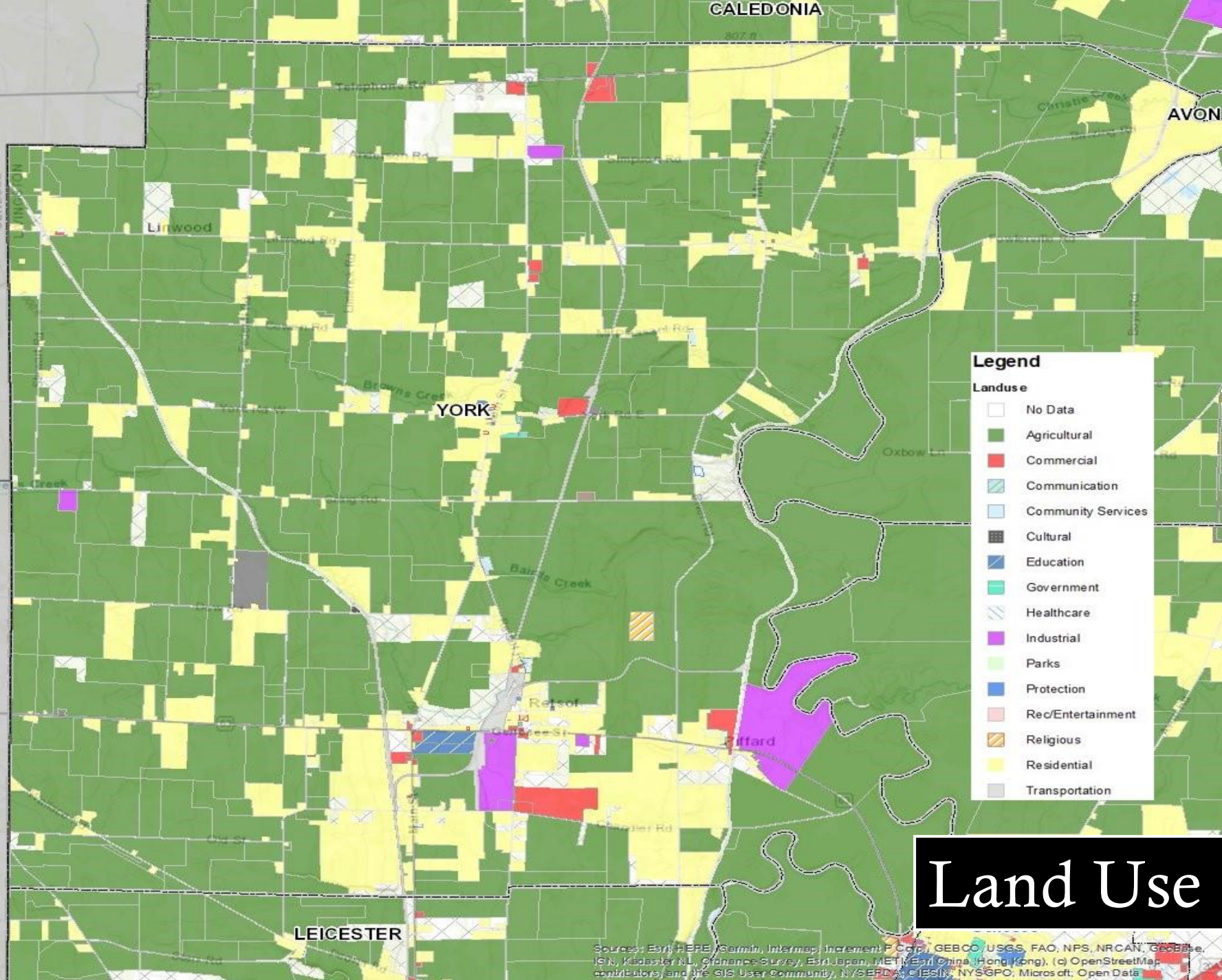
- Current Conditions
 - Land Use/
Zoning
 - Environment
 - Agriculture
- Vision
- Engagement Tasks



LAND USE & ZONING

Land use planning is critical to developing habitable space and sustaining future growth. It is the basis for zoning laws and helps enhance the community, conserve resources, and promote economic vitality and social engagement.

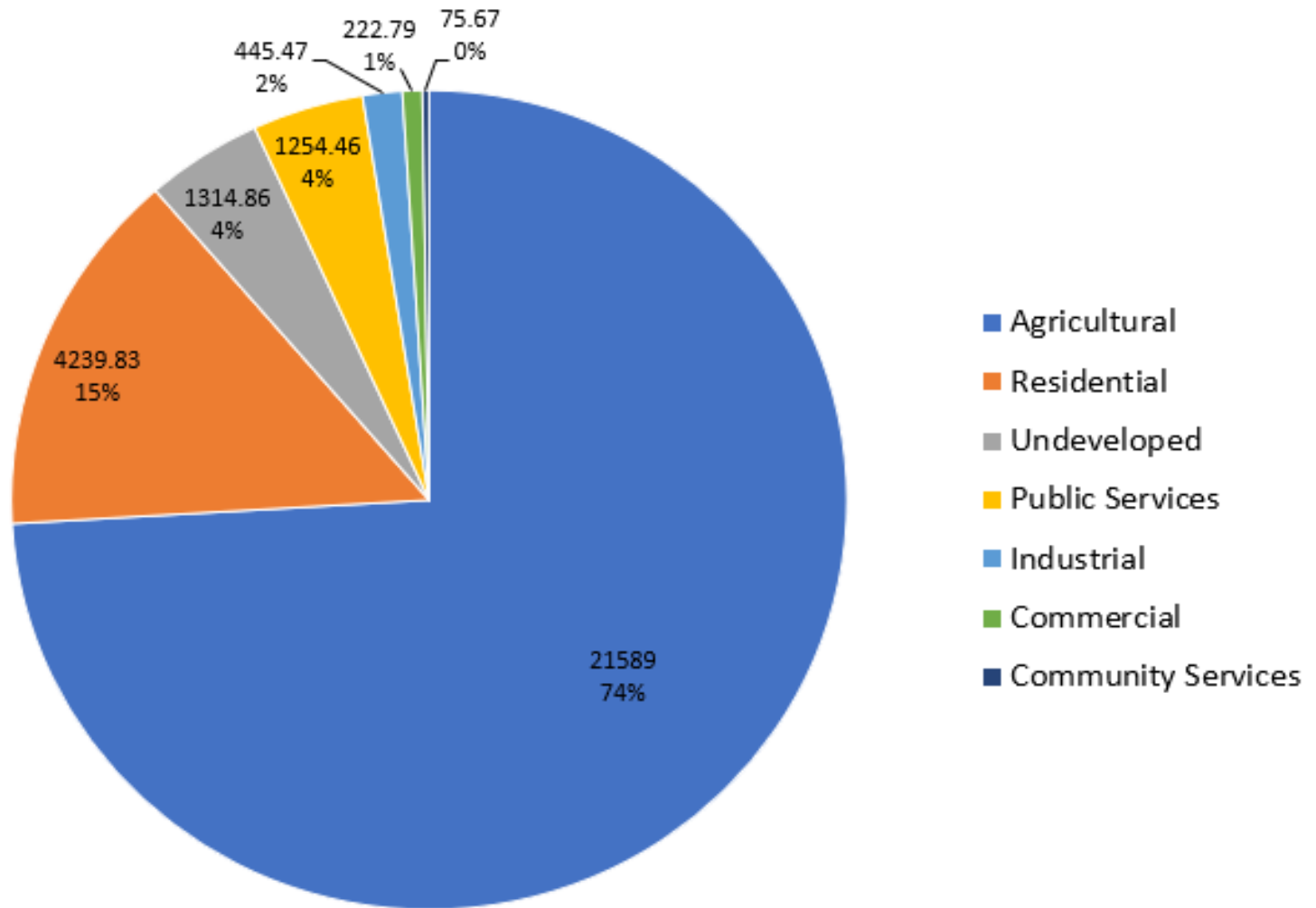
Smart Growth Principles: Mixed, Compact, Efficient, Adaptive, and Green!



Land Use

Sources: Esri, HERE, Garmin, Intermap, increment P Corp., GEBCO, USGS, FAO, NPS, NRCAN, GEBCO, IGN, Kadaster NL, Ordnance Survey, Esri Japan, METI, Esri China (Hong Kong), (c) OpenStreetMap contributors, and the GIS User Community, NYSEPRDA, CIBIS, NYS&P, Micros oft, Open Data

Town of York Land Use



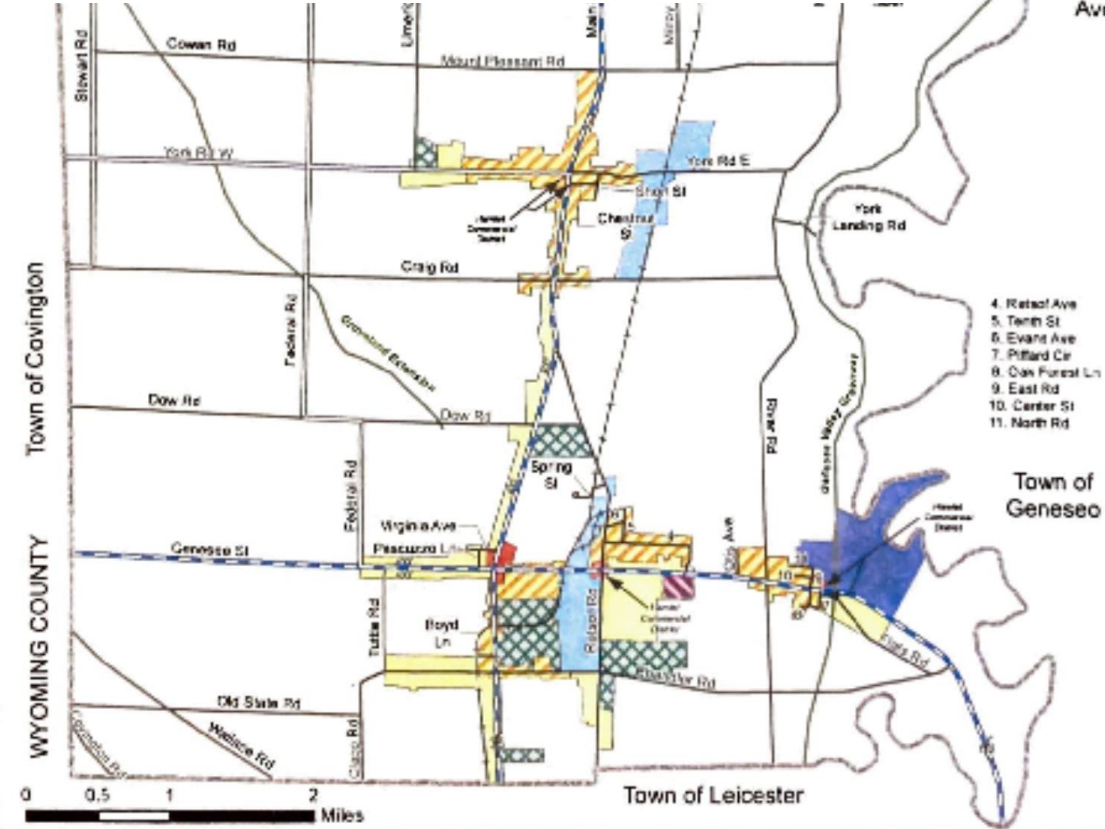
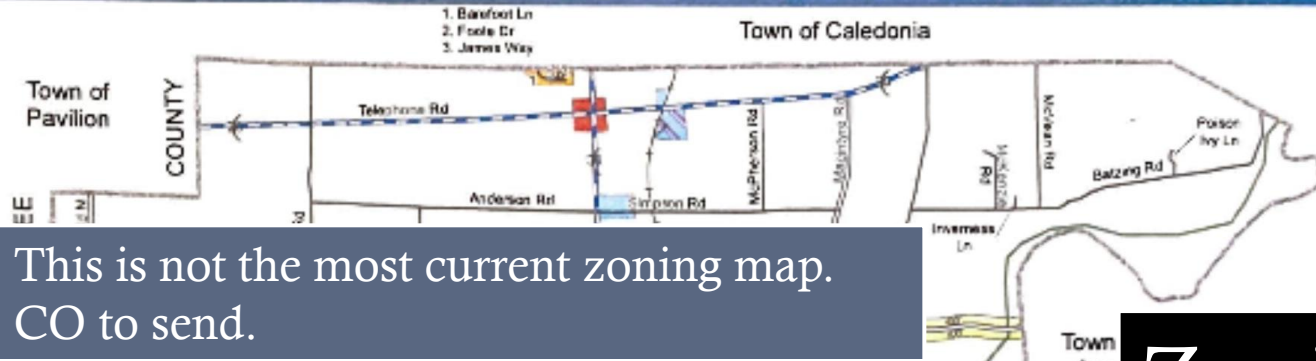
Town of York

Zoning Map

2

This is not the most current zoning map. CO to send.

Zoning



Proposed Zoning Districts

	Agricultural		Commercial
	Adult Use Overlay		Mixed Use
	Residential		Industrial
	Hamlet Residential		Light Industrial
	High Density Residential		Planned Development
	Hamlet Commercial		



Legend

	Town Road
	County Highway
	State Highway
	Railroad
	Trail
	Town Boundary

Map prepared by the Livingston County Planning Department. June 2008
MARCEY/STONER/2008_ZONING_LIVING.MXD

LAND USE VS ZONING - 2006

EXISTING LAND USE - TOWN OF YORK

Use	Acres	Percent
Agricultural	24,804	82.8%
Residential	2,930	9.8%
Commercial	230	0.8%
Recreation/Entertainment	26	0.1%
Community Service	113	0.4%
Industrial	417	1.4%
Public Service	135	0.5%
vacant	1,317	4.4%
Total	29,972	

EXISTING ZONING - TOWN OF YORK

Zone	Acres	Percent
Agricultural	27,596	92.1%
Residential - RA	818	2.7%
Residential - RAA	60	0.2%
Planned Development	18	0.1%
Public	321	1.1%
Business	73	0.2%
Industrial	1,086	3.6%
Total	29,972	

What aspects of zoning account for open space, sensitive environmental features, forest blocks, connectivity, etc? **Mismatch in residential, commercial, industrial**

LAND USE 2006 VS CURRENT

2006 Land Use

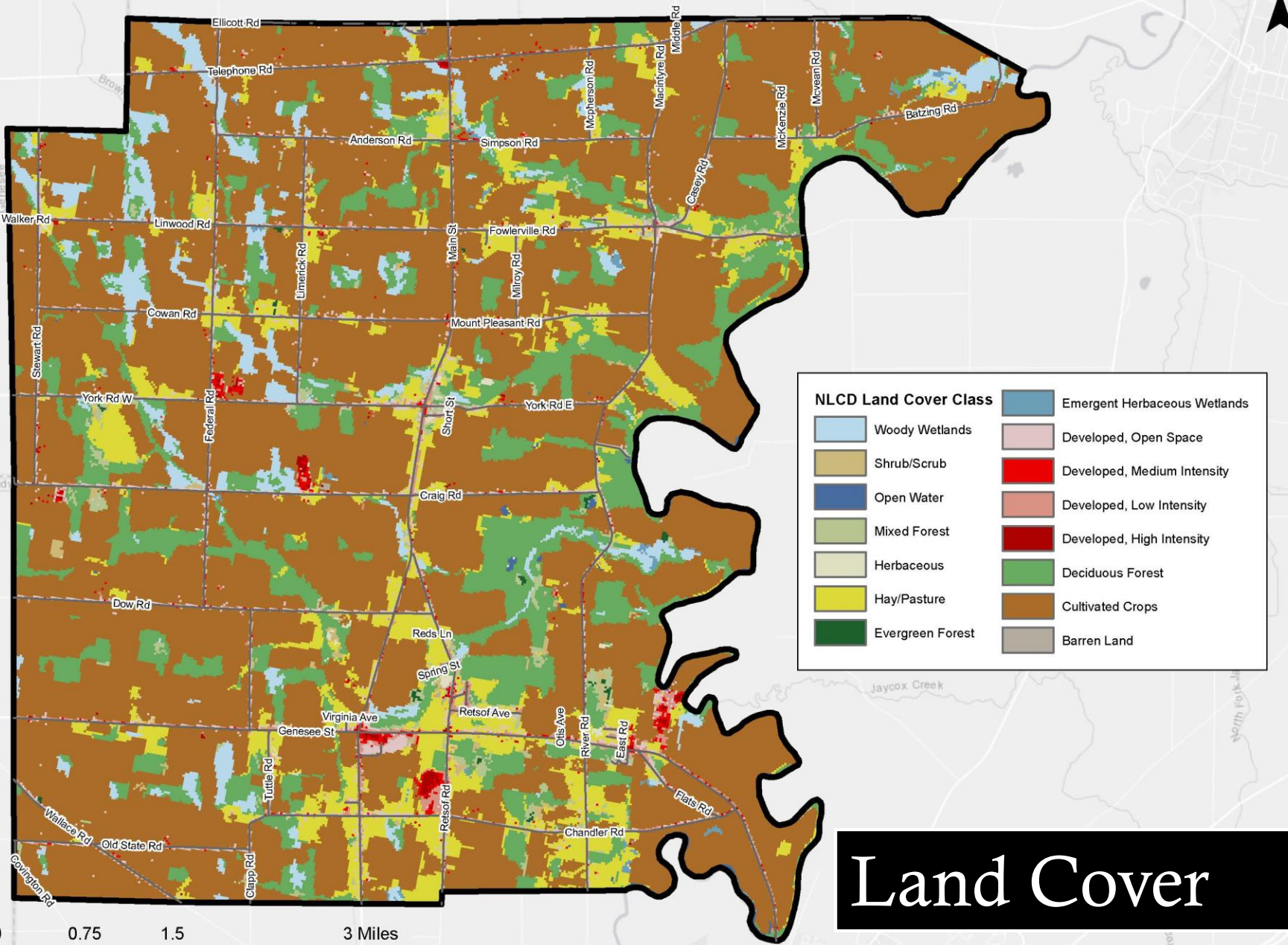
Use	Acres	Percent
Agricultural	24,804	82.8%
Residential	2,930	9.8%
Commercial	230	0.8%
Recreation/Entertainment	26	0.1%
Community Service	113	0.4%
Industrial	417	1.4%
Public Service	135	0.5%
vacant	1,317	4.4%
Total	29,972	

Current Land Use

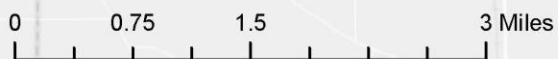
Use	Acres ac	Percent
Agricultural	21,589	74.1%
Residential	4,240	14.5%
Undeveloped	1,315	4.5%
Public Services	1,254	4.3%
Industrial	445	1.5%
Commercial	223	0.8%
Community Services	76	0.3%
Total	29,142	100.0%

Clear growth of residential, change in public service may be designation of the Abbey lands from agriculture to public service?

N



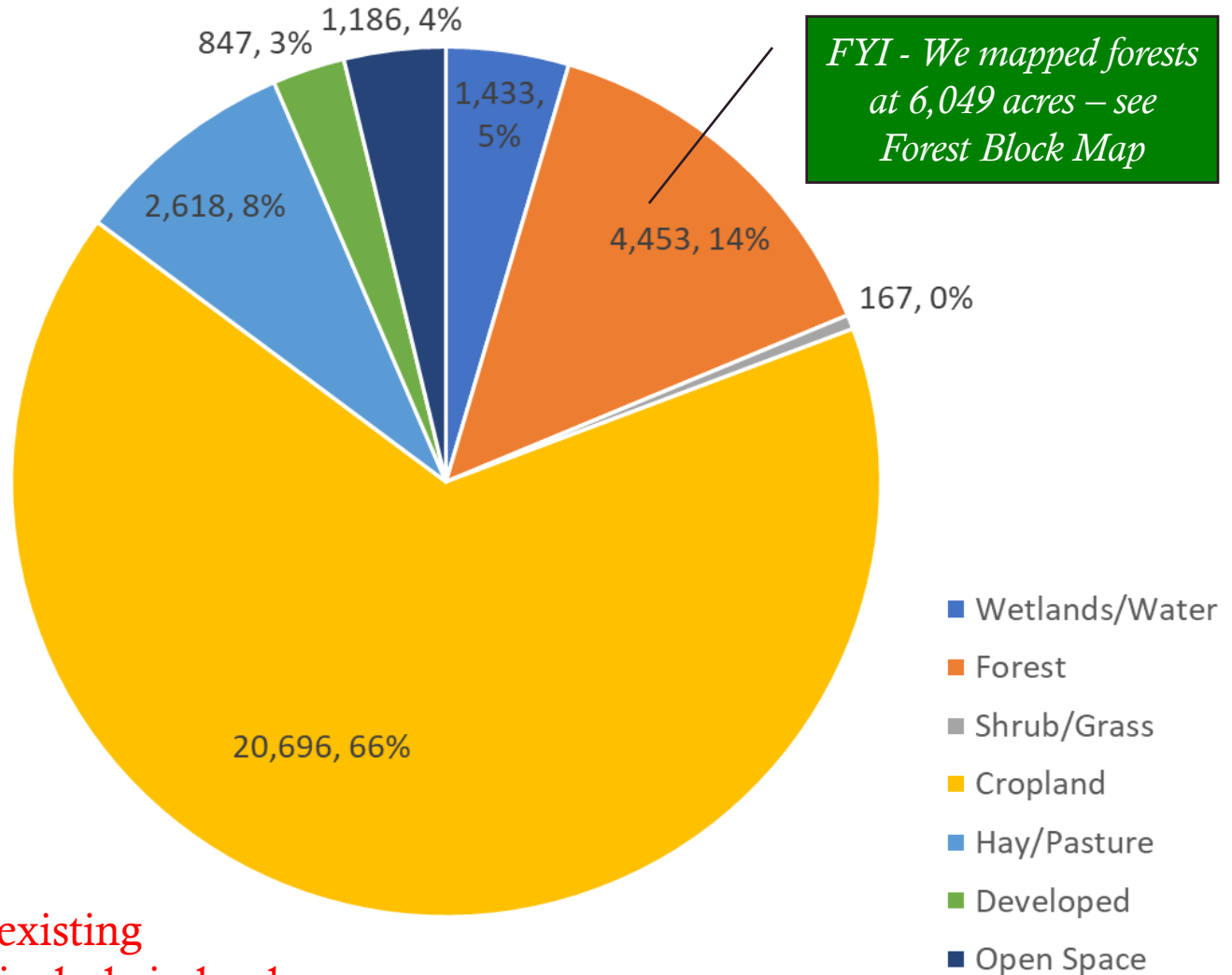
Land Cover



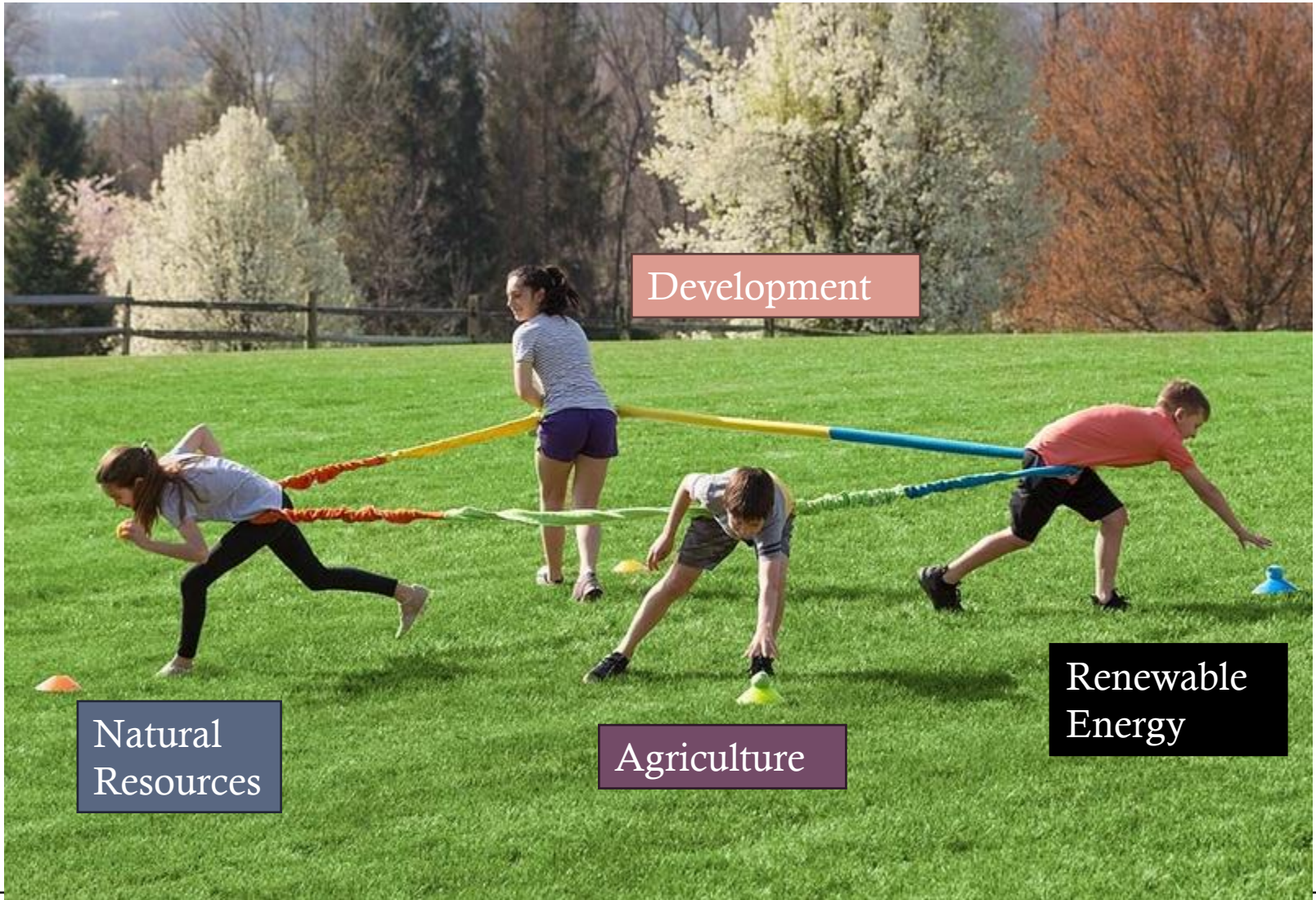
Land Cover Data

Align Land Use, Zoning, and Land Cover to create a meaningful, cohesive, effective land use plan with the necessary regulations. Anything else is in conflict from the start.

See if we can get existing easement data to include in land use and mapping



Land: Not Making Any More, So...



Natural
Resources

Agriculture

Development

Renewable
Energy

NATURAL RESOURCES

Wetlands

Streams

Floodplains

Forests

Wildlife

Soils

Farmland

Salt Deposits



Clean Water/Air

Flood control

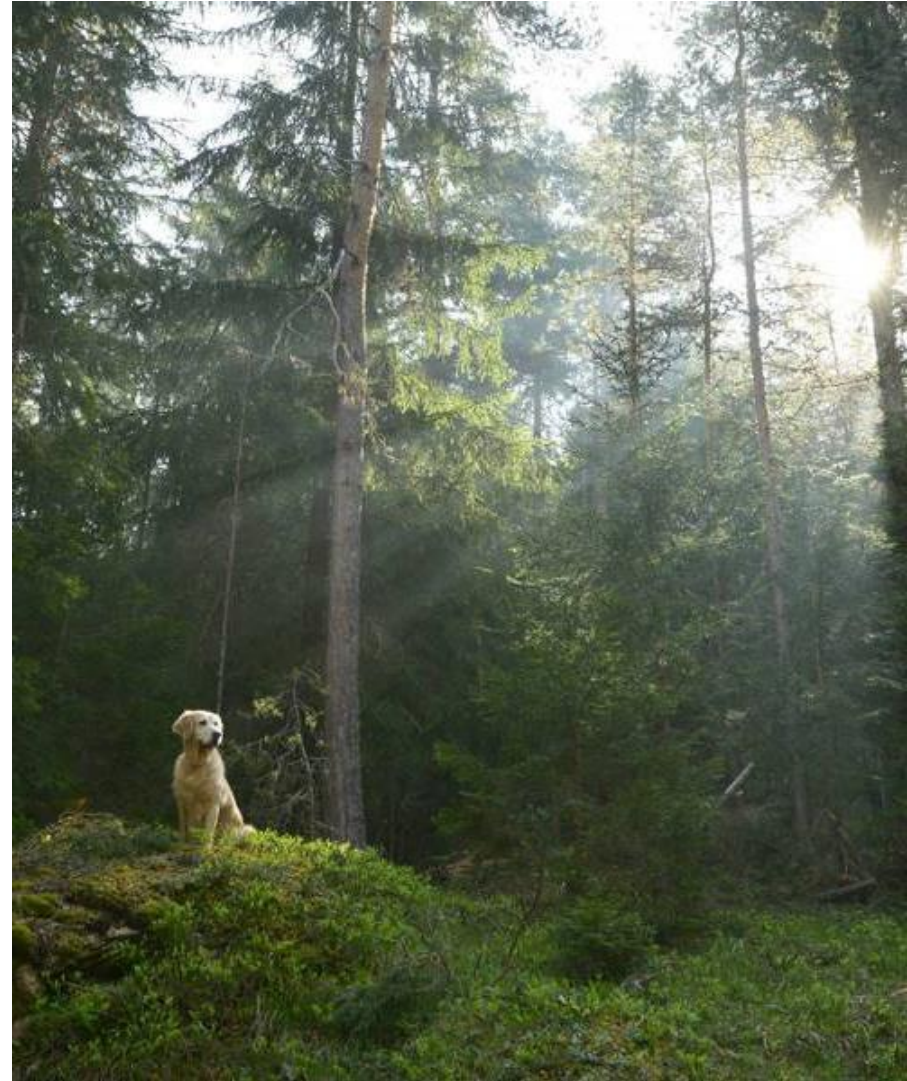
Cooler temps

Food

Aesthetics

Culture

Economy



NATURAL RESOURCE RELATED OBJECTIVES 2006

Sensitive Areas

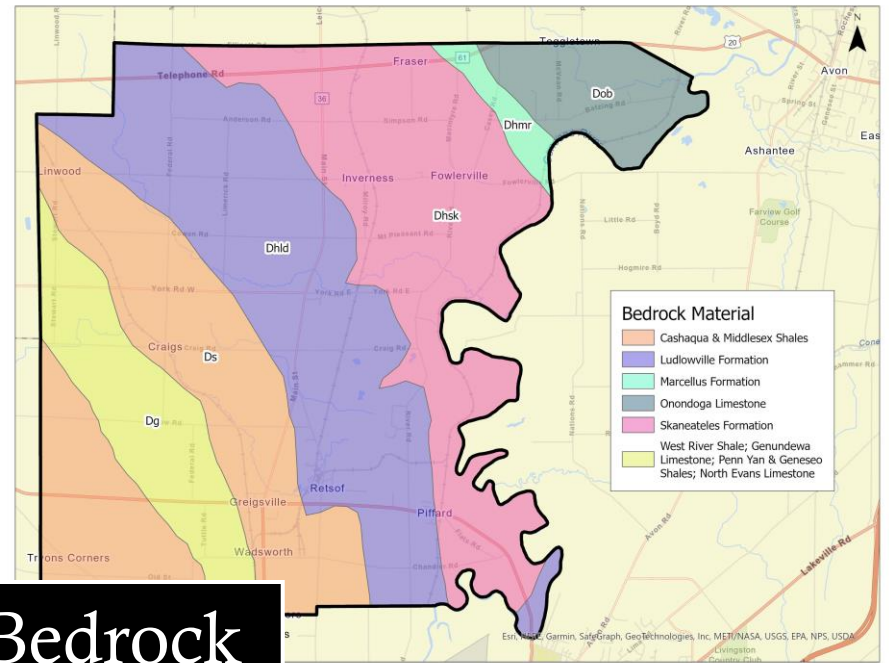
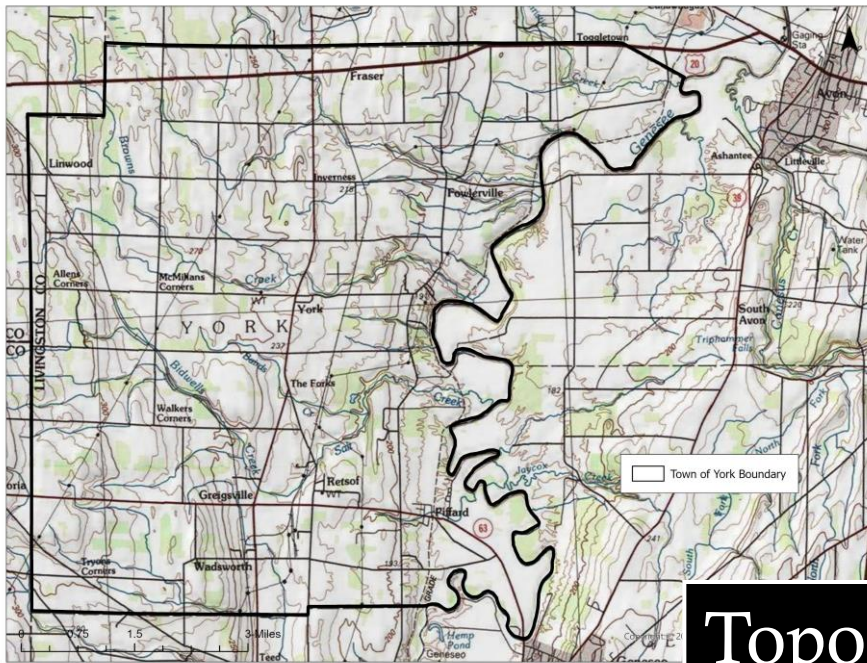
- Protect natural resources, historic, and cultural heritage to greatest practical extent.
- Initiate and continue conservation with attention to steep slopes, wetlands, floodplains, woodlands and other critical features
- Support growth and minimize impact to natural resources

Farmland

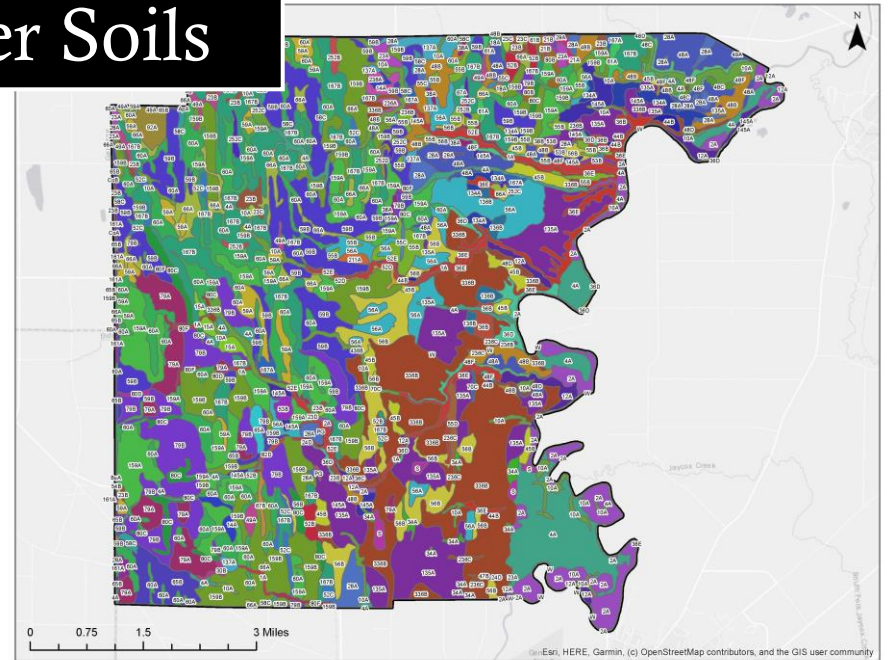
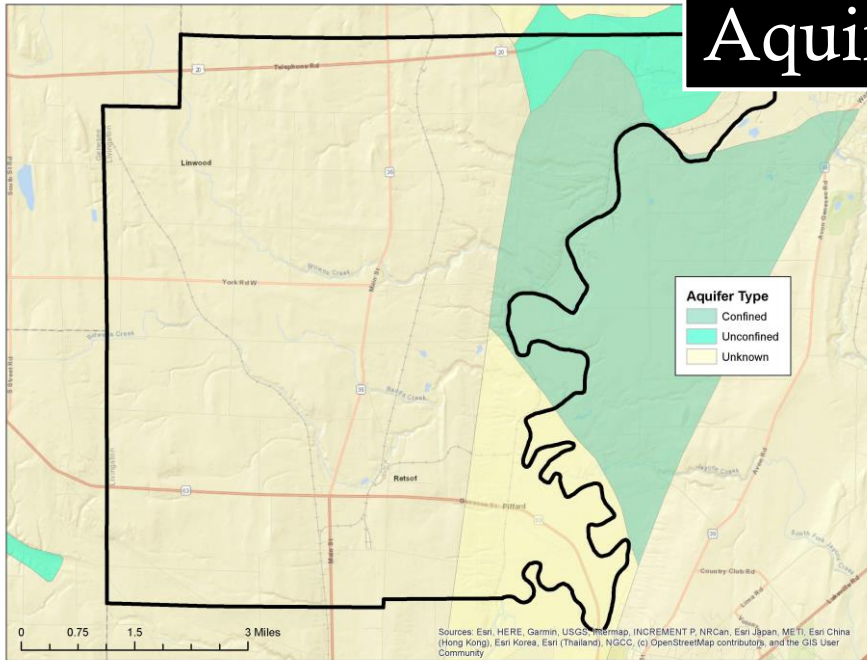
- Protect/enhance g resources and viable farming areas and support ag as industry and land use.
- Support viability of farmland
- Prioritize development to non-agricultural areas

Recreation

- Stive for a variety of recreational opportunities.
- Improvements to trails, parks, community spaces.



Topo Bedrock Aquifer Soils

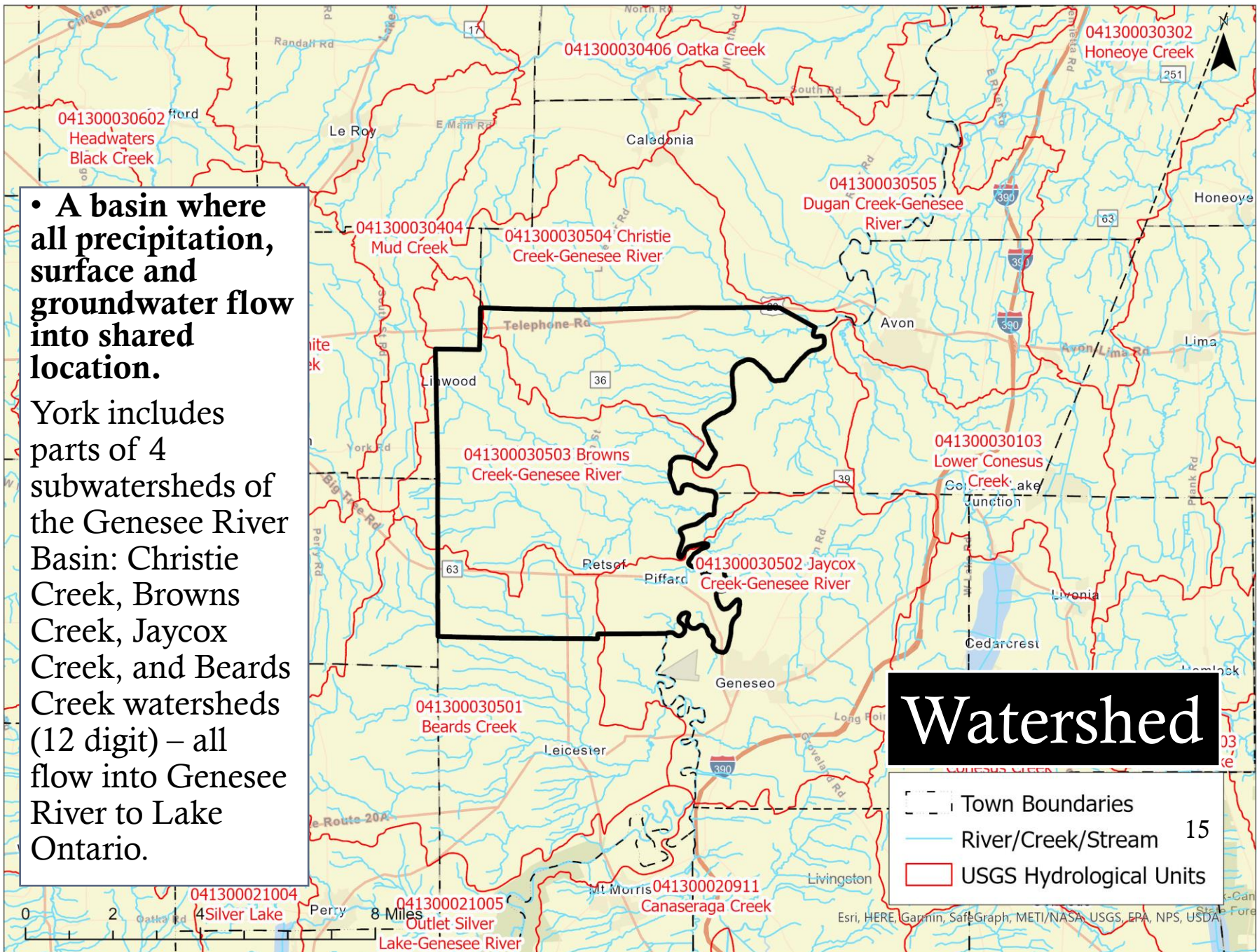


Sources: Esri, HERE, Garmin, USGS, Mapbox, INCREMENT P, NRCan, Esri Japan, METI, Esri China (Hong Kong), Esri Korea, Esri (Thailand), NGCC, (c) OpenStreetMap contributors, and the GIS User Community




Esri, HERE, Garmin, (c) OpenStreetMap contributors, and the GIS user community

• A basin where all precipitation, surface and groundwater flow into shared location.

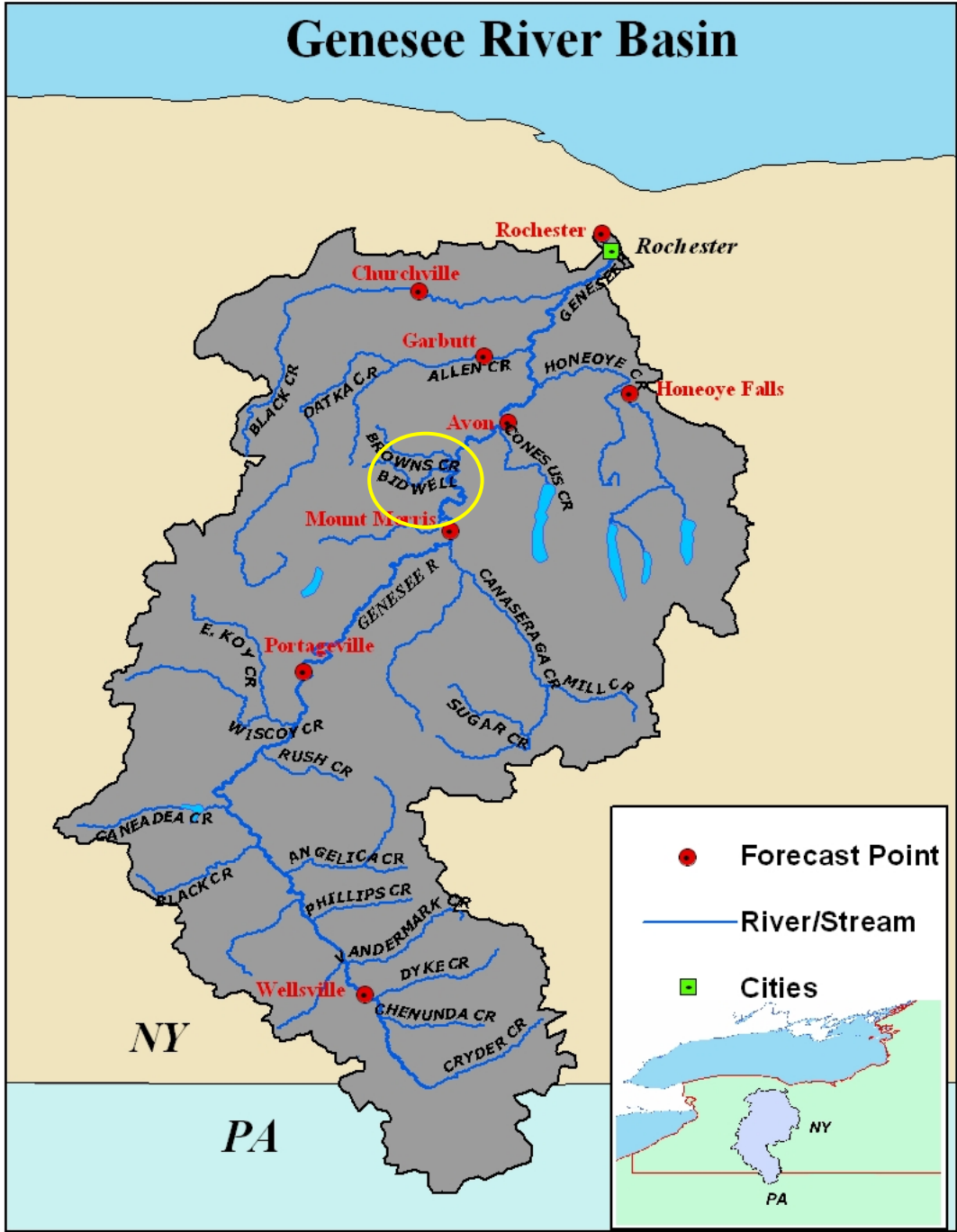
York includes parts of 4 subwatersheds of the Genesee River Basin: Christie Creek, Browns Creek, Jaycox Creek, and Beards Creek watersheds (12 digit) – all flow into Genesee River to Lake Ontario.



Watershed

-  Town Boundaries
-  River/Creek/Stream
-  USGS Hydrological Units

Genesee River Basin



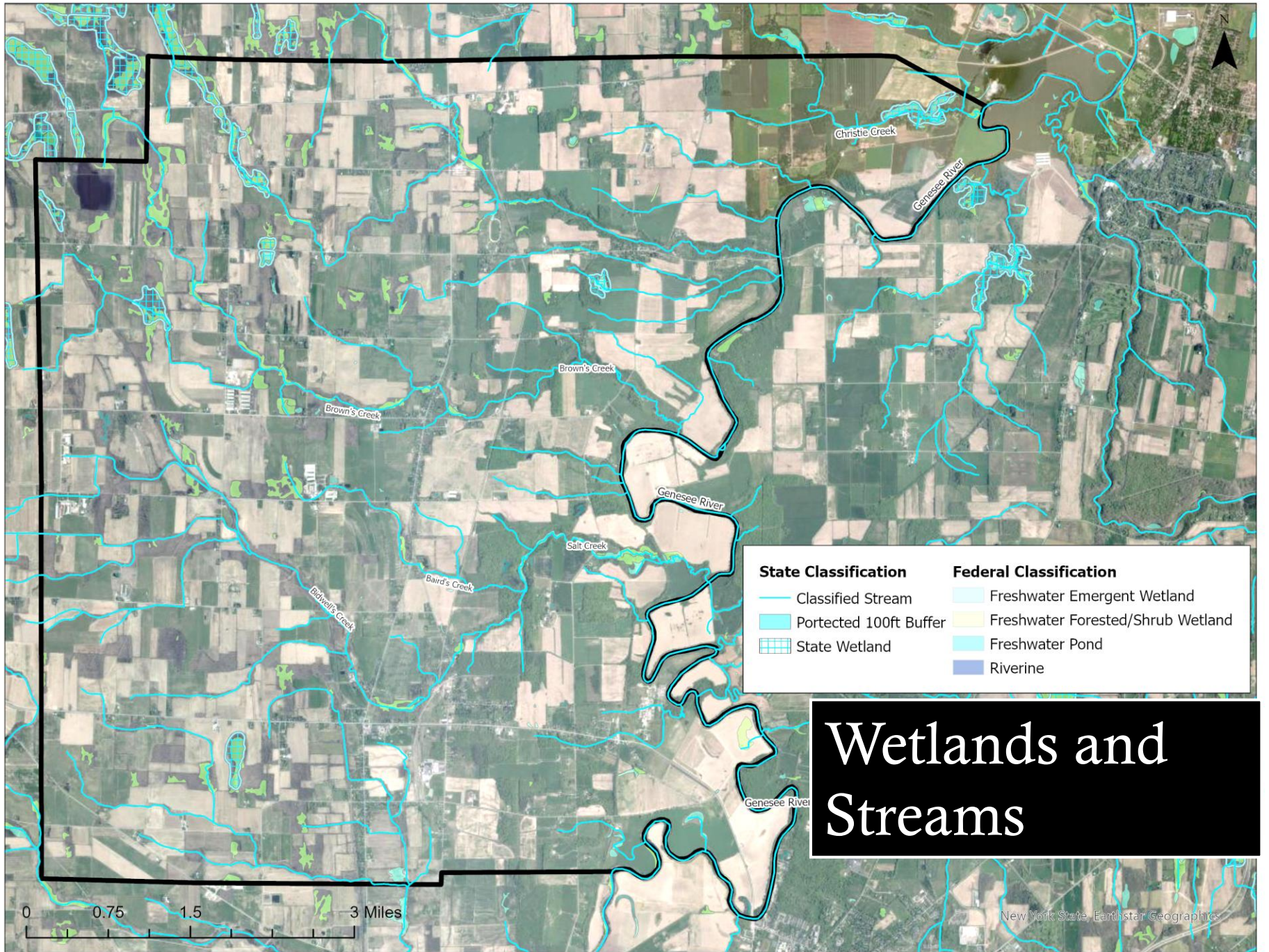
WETLANDS & STREAMS

- Provide habitat for wildlife, filter surface water and control flooding – Protected...sort of.
- Drinking water, fisheries, outdoor recreation, wildlife habitat, scenic and recreation
- Intact riparian forested buffers and floodplains = flood control, connectivity for habitat, erosion and sediment control and water quality



Pond along the Genesee Valley Greenway in Cuylerville, NY. – Photo by Jules Hoepting

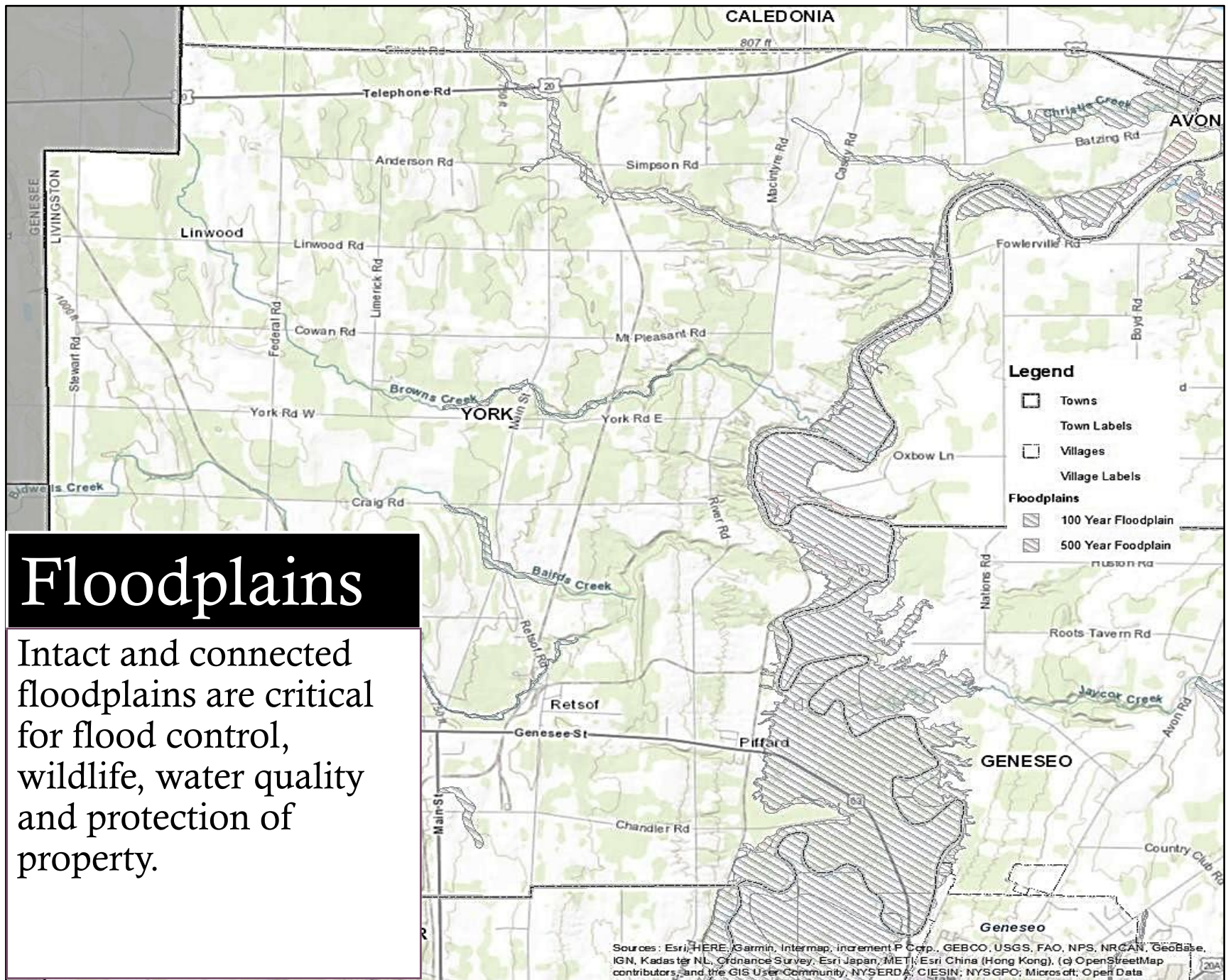




Wetlands and Streams

Floodplains

Intact and connected floodplains are critical for flood control, wildlife, water quality and protection of property.





“Forests are the lungs of our land, purifying the air and giving fresh strength to our people.” – Franklin D. Roosevelt

FORESTS

Forests are increasingly valued resources in rural and urban areas alike and are top on the list for protection worldwide!

Forests:

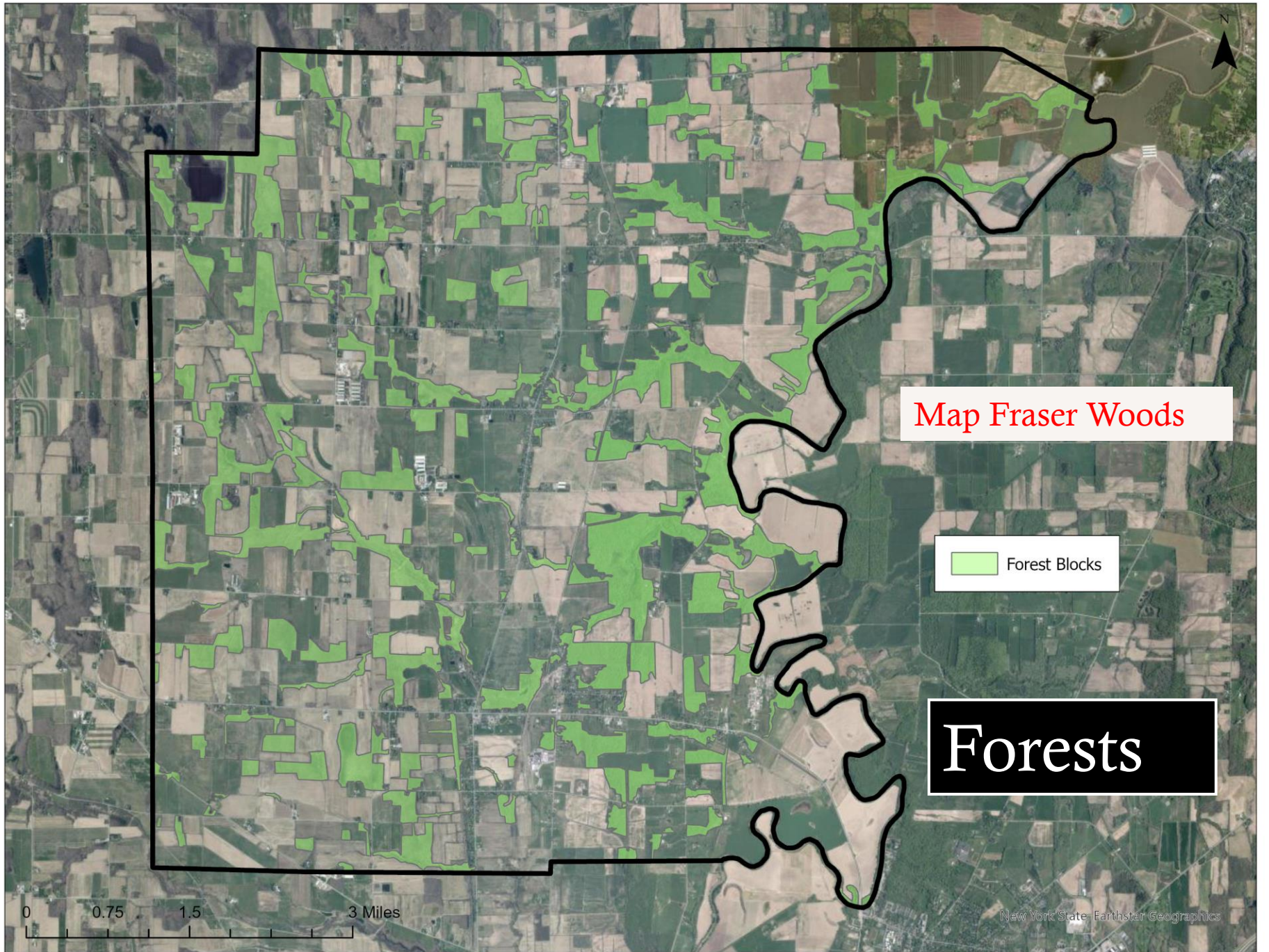
- Protect air quality
- Sequester carbon
- Cool temperatures
- Connective habitat for wildlife
- Improve water quality
- Recreation and scenic resources
- Economic benefits

Urban Forests

Street trees, trees in parks, along waterways, and remnant forest blocks in urban/suburban settings are also increasingly important. Urban forests:

- Filter air
- Conserve energy
- Control stormwater
- Add beauty





Map Fraser Woods

Forest Blocks

Forests

0 0.75 1.5 3 Miles

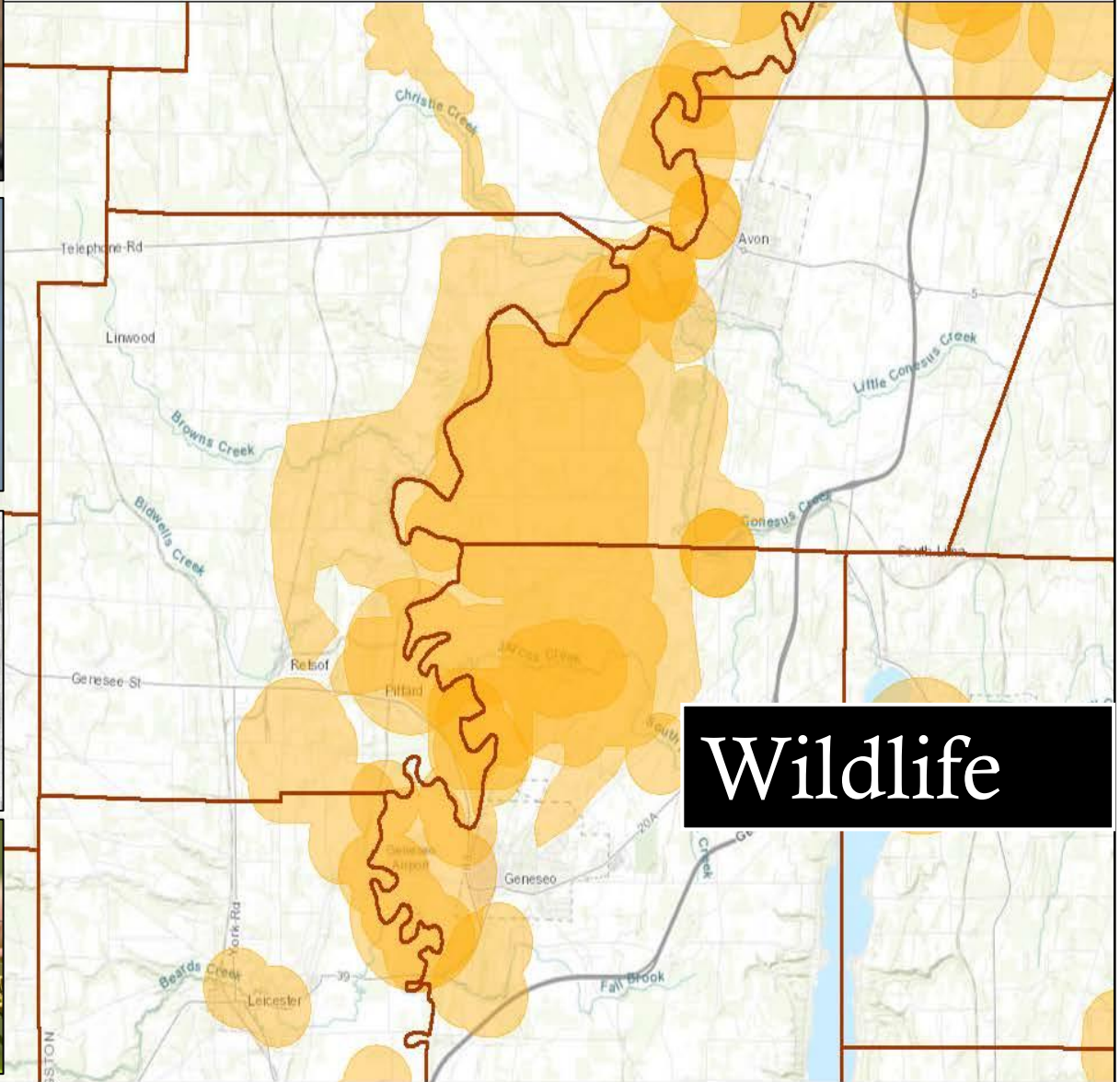
WILDLIFE

Many amphibians, reptiles, birds, and mammals make their home in rural and urban settings. York is rich in natural habitats. Diverse wildlife populations serve important functions including:

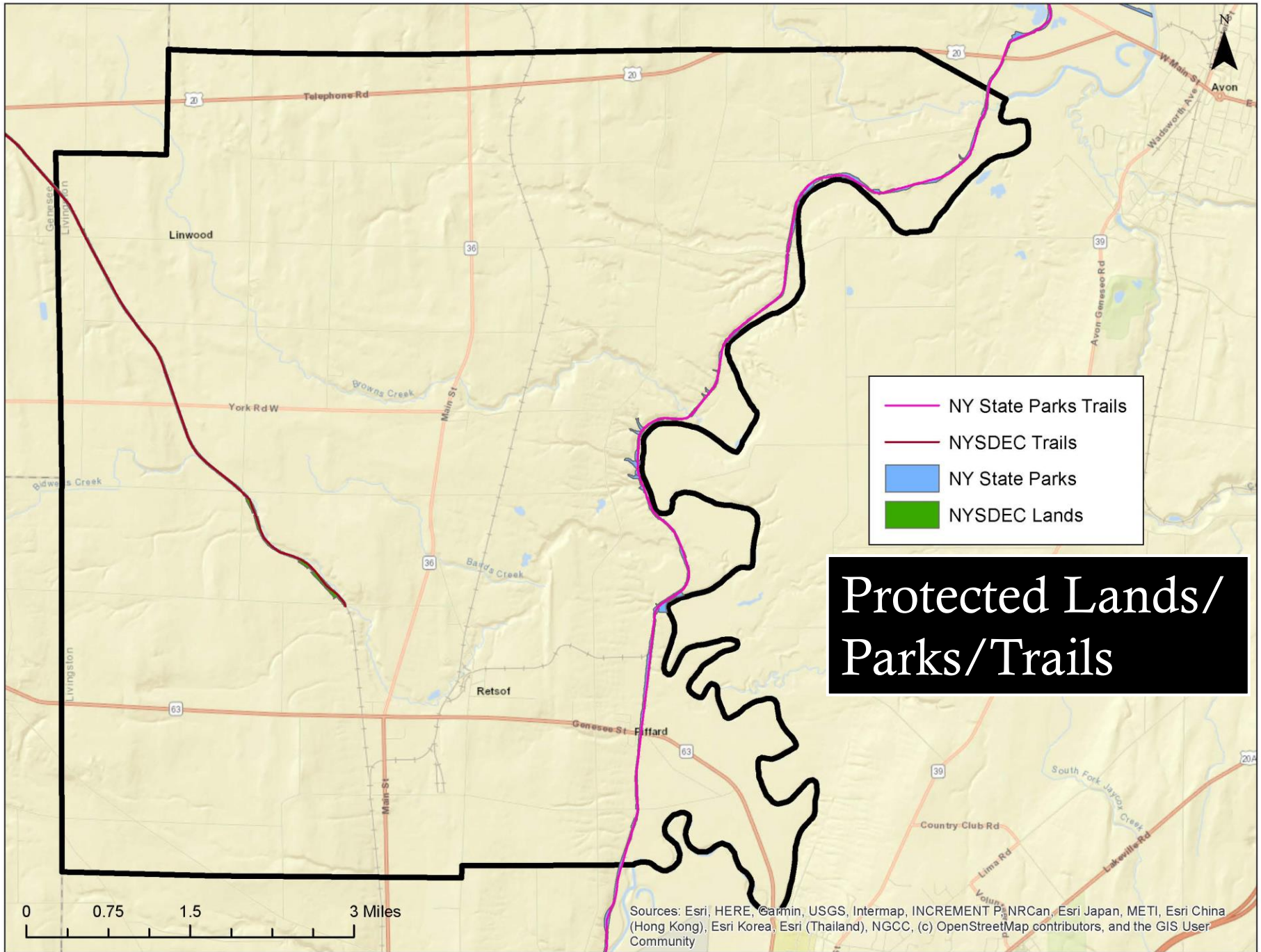
- Ecosystem support
- Predators of pest species
- Support biodiversity
- Wildlife observation
- Education
- Sense of wonder



NYS Rare Species



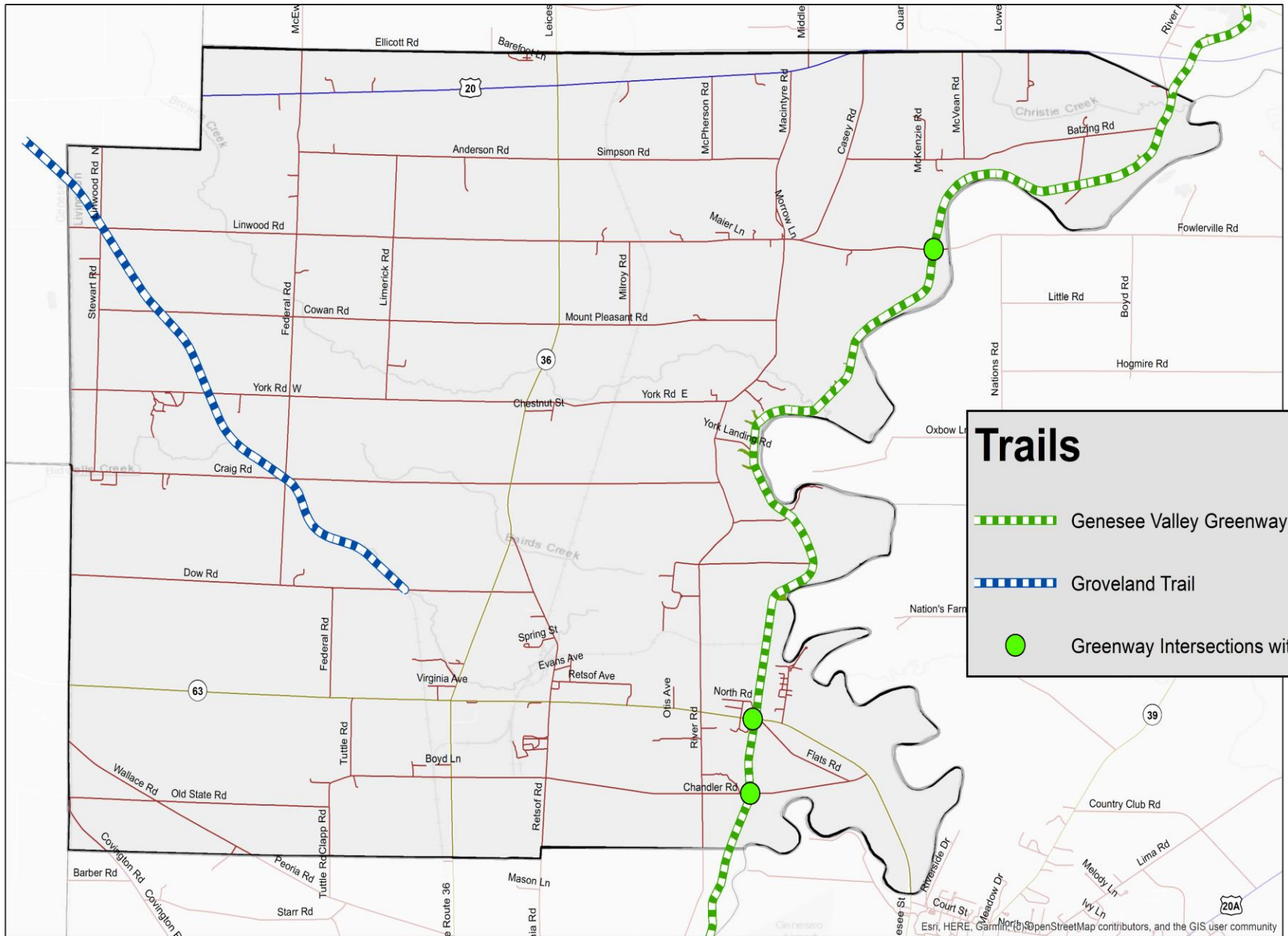
Wildlife



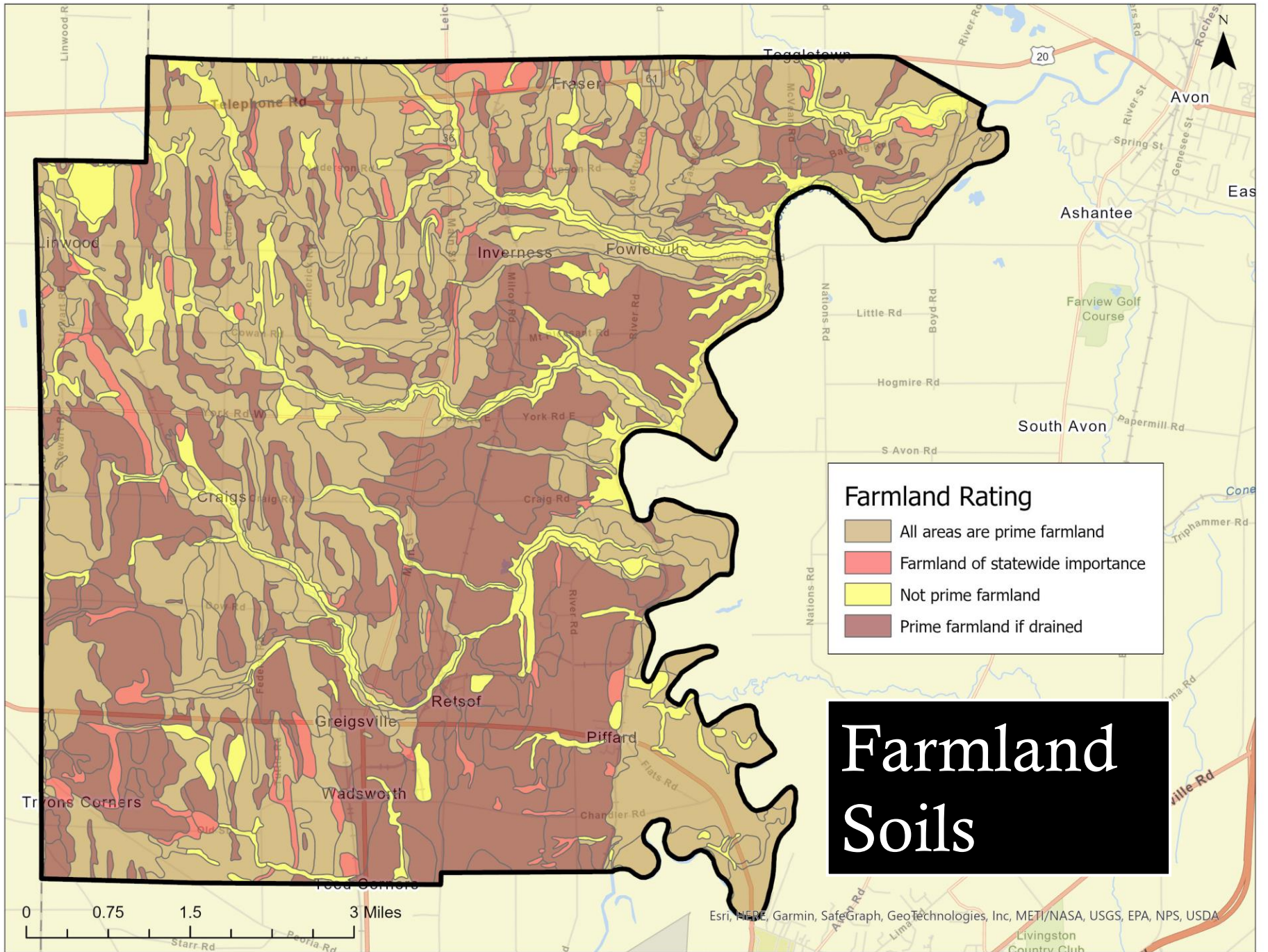
- NY State Parks Trails
- NYSDEC Trails
- NY State Parks
- NYSDEC Lands

Protected Lands/ Parks/Trails

Sources: Esri, HERE, Garmin, USGS, Intermap, INCREMENT P, NRCan, Esri Japan, METI, Esri China (Hong Kong), Esri Korea, Esri (Thailand), NGCC, (c) OpenStreetMap contributors, and the GIS User Community



Greenway trail connects Avon to Mt. Morris



Farmland Preservation Committee

The Town of York has embraced its agricultural heritage and rural character. The Comprehensive Plan and Zoning Codes protect and encourage farming and agriculture, which is the dominant land use in York. Over 90% of the town is presently zoned agricultural with approximately 24,000 acres in either a New York State Ag district or qualifying for an Ag value assessment. The town passed a Right to Farm Law in 2010, becoming the first town in Livingston County to enact such a law.

The Town has a Farmland and Open Space Preservation Committee meets in the Town Hall. All are welcome to attend.

The goals of the committee include:

1. Encouraging the development of new and existing farms and Agribusinesses within the town
2. Developing strategies for the implementation of a long-term farmland/open space preservation program

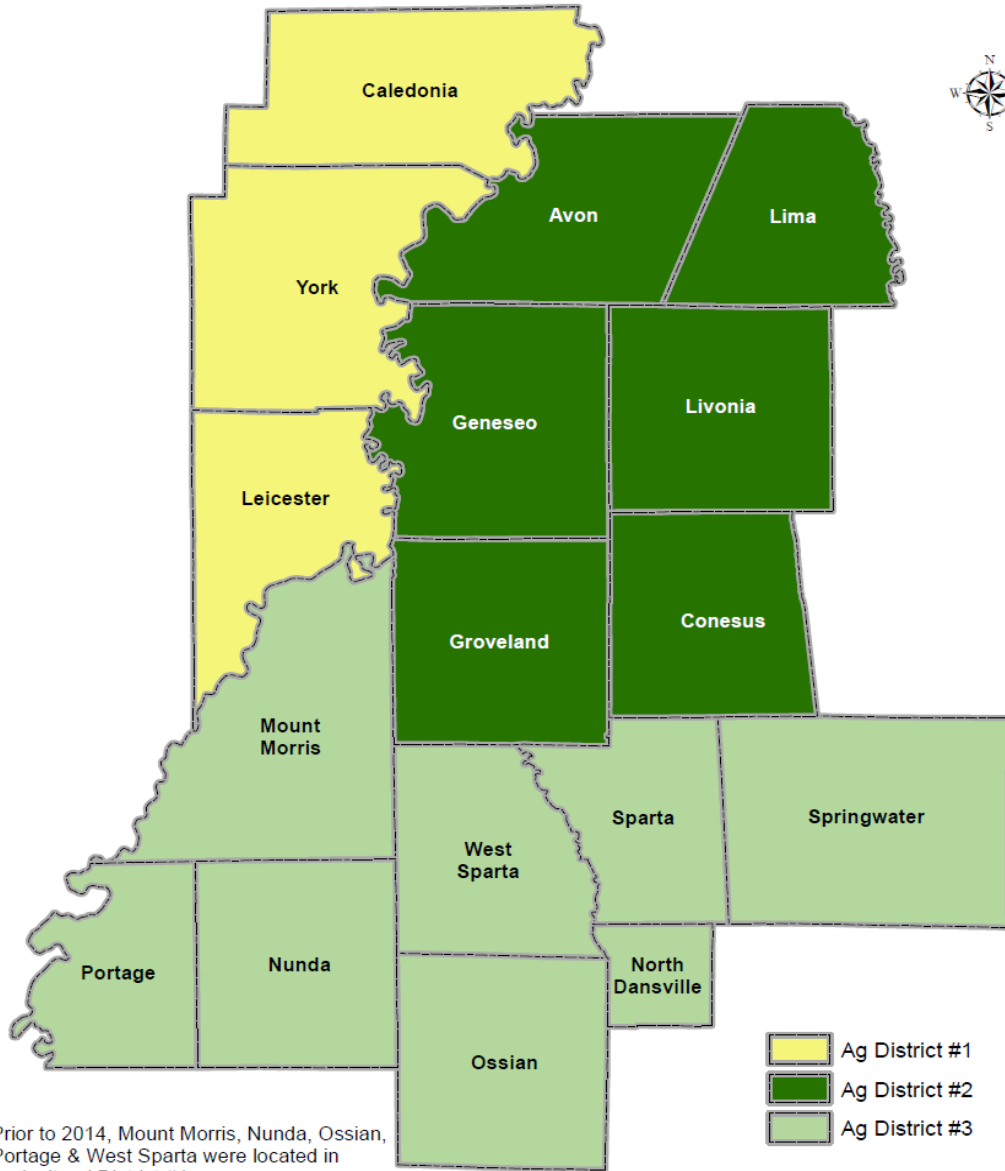
**This committee is
not functional**

We are encouraging agricultural landowners and businesses to put a profile on the Town website to promote the Town's agriculture. For more info contact David Deuel at dsdeuel@gmail.com.

Additional Information

- [Farmland Preservation Committee Meeting Minutes](#)
- [Town of York - Parcels in Agricultural District #1](#)
- [Town of York - Soil Classifications](#)
- [Town of York Right to Farm Law](#)
- [Town of York Open Space Survey Results and Comments](#)

Livingston County Agricultural Districts



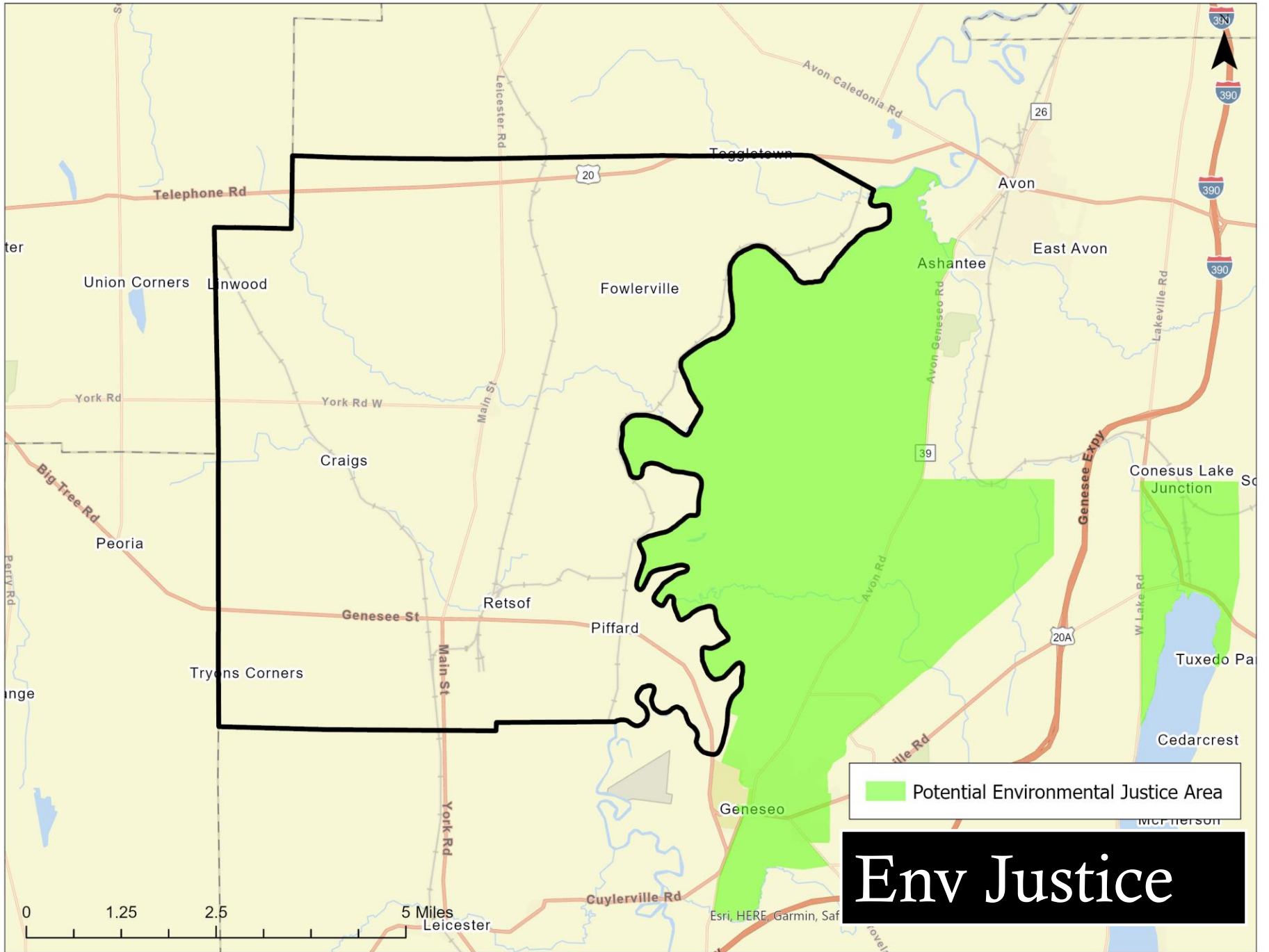
Prior to 2014, Mount Morris, Nunda, Ossian, Portage & West Sparta were located in Agricultural District #4

0 2.5 5 Miles

AGRICULTURE

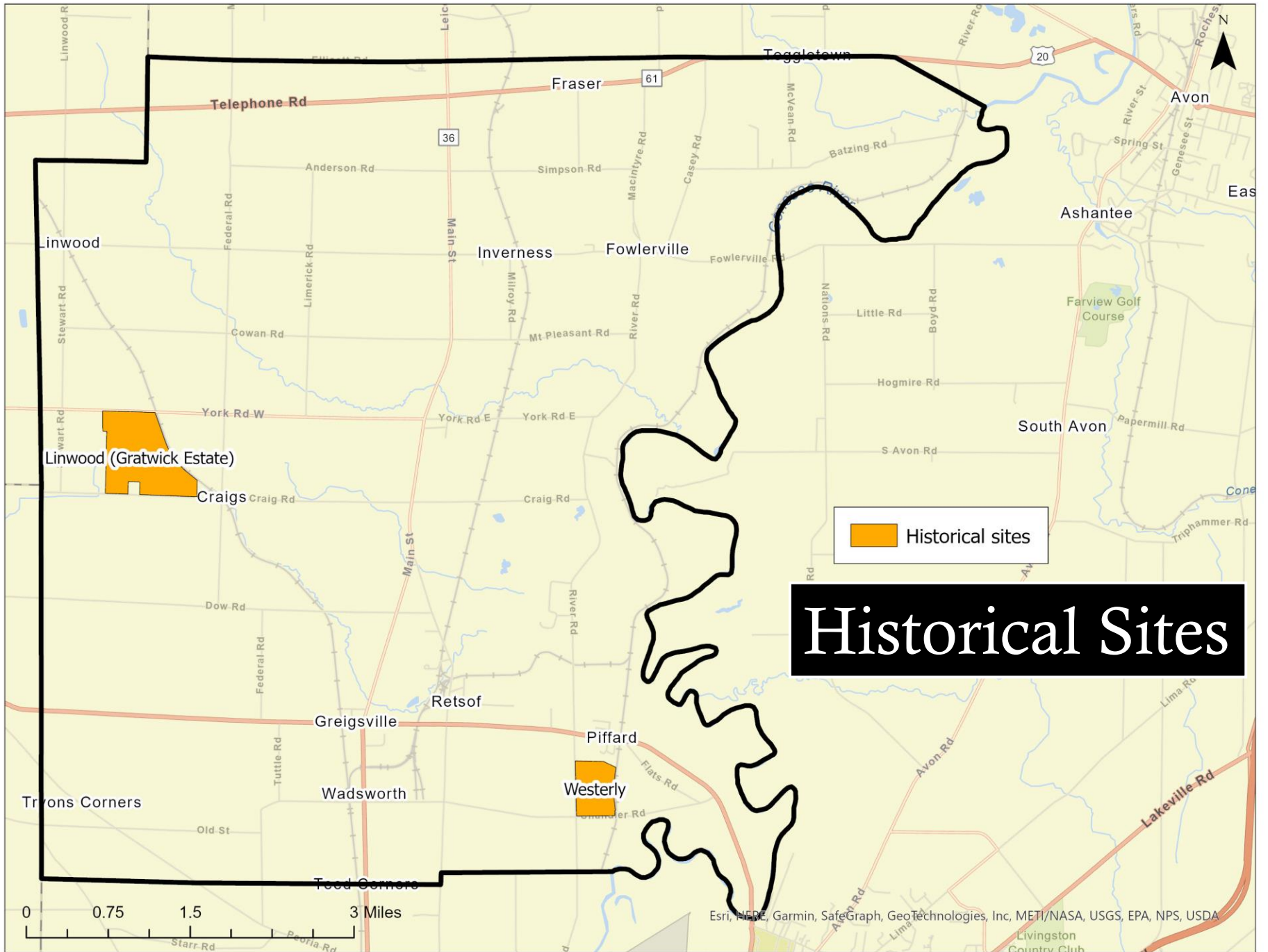
Agriculture is the primary land use, land cover type, and priority economic driver in many upstate rural townships, including York. The ag district program helps keep farmland in agricultural production

Green!



Potential Environmental Justice Area

Env Justice



Linwood (Gratwick Estate)

Westerly

Historical sites

Historical Sites

0 0.75 1.5 3 Miles

Esri, HERE, Garmin, SafeGraph, GeoTechnologies, Inc, METI/NASA, USGS, EPA, NPS, USDA

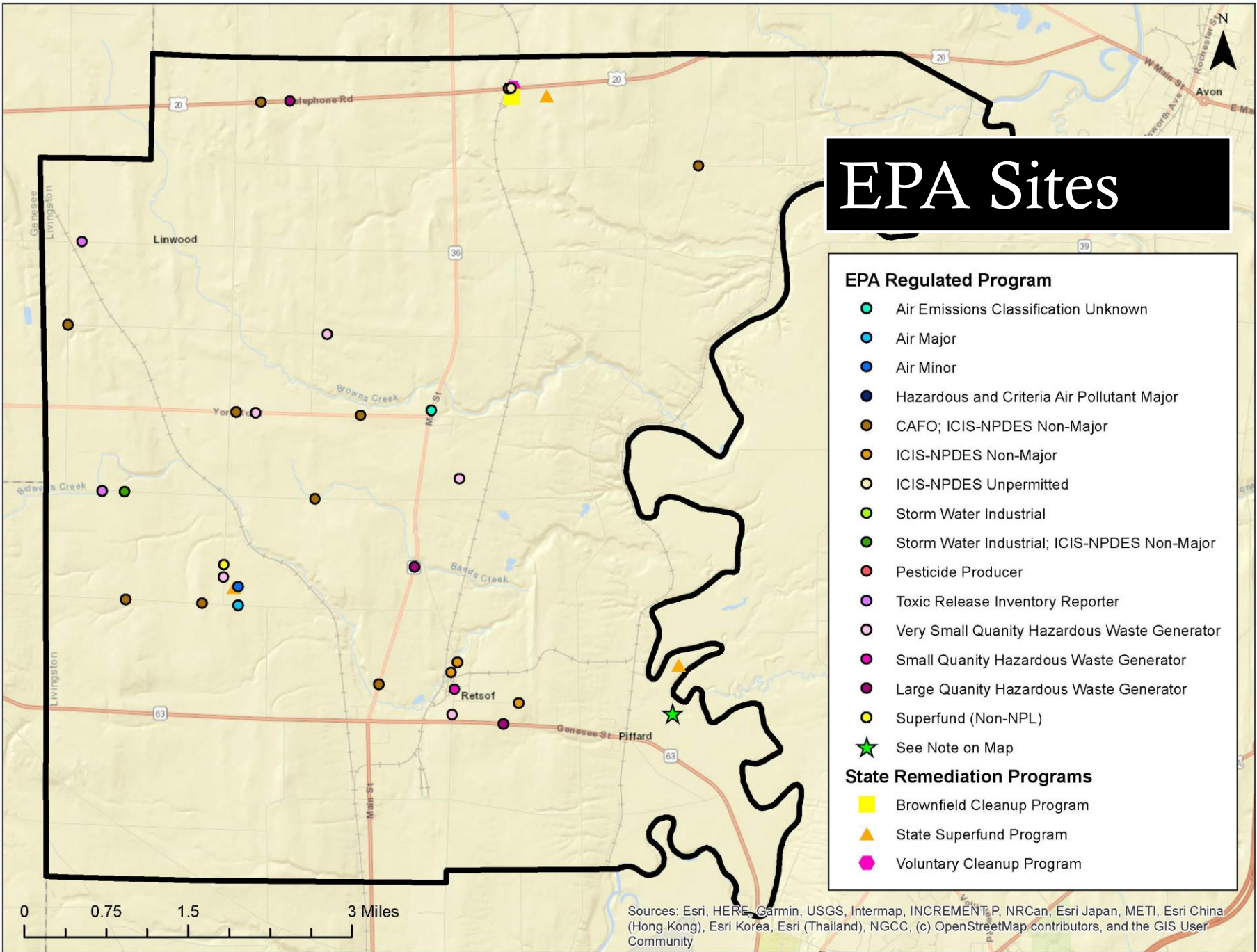
EPA Sites

EPA Regulated Program

- Air Emissions Classification Unknown
- Air Major
- Air Minor
- Hazardous and Criteria Air Pollutant Major
- CAFO; ICIS-NPDES Non-Major
- ICIS-NPDES Non-Major
- ICIS-NPDES Unpermitted
- Storm Water Industrial
- Storm Water Industrial; ICIS-NPDES Non-Major
- Pesticide Producer
- Toxic Release Inventory Reporter
- Very Small Quantity Hazardous Waste Generator
- Small Quantity Hazardous Waste Generator
- Large Quantity Hazardous Waste Generator
- Superfund (Non-NPL)
- ★ See Note on Map

State Remediation Programs

- Brownfield Cleanup Program
- ▲ State Superfund Program
- Voluntary Cleanup Program



Sources: Esri, HERE, Garmin, USGS, Intermap, INCREMENT P, NRCan, Esri Japan, METI, Esri China (Hong Kong), Esri Korea, Esri (Thailand), NGCC, (c) OpenStreetMap contributors, and the GIS User Community

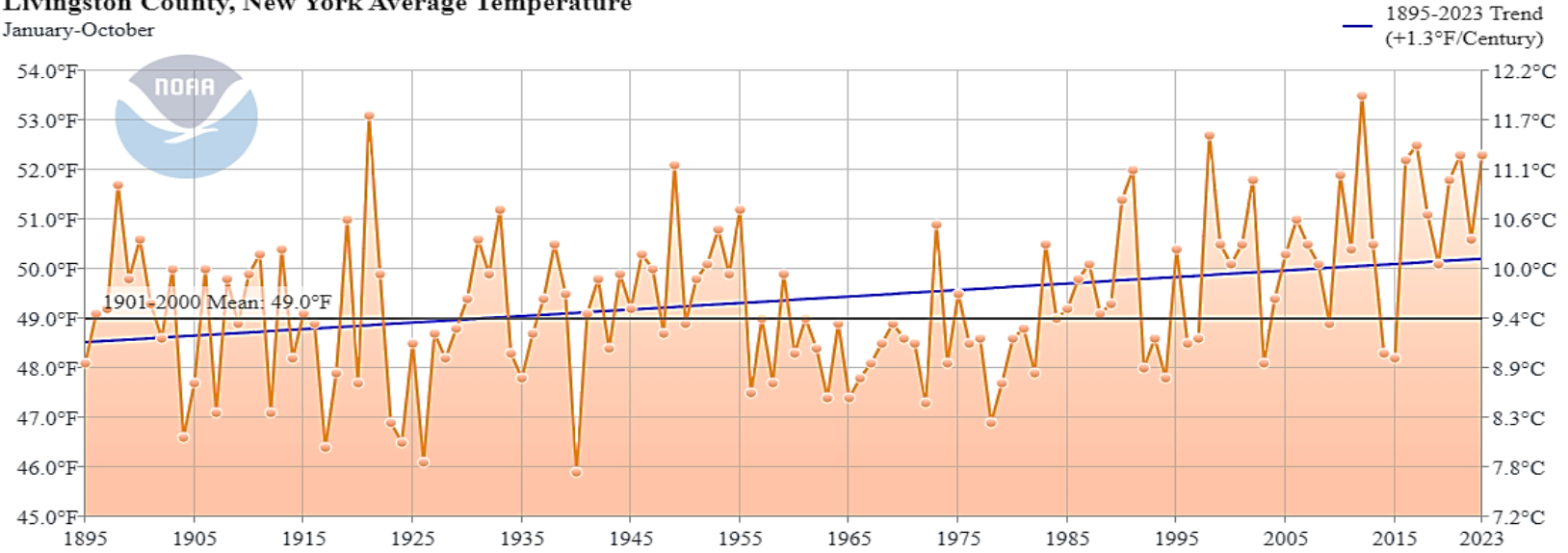
Climate - Past

- Moderately warm summers (average of 78 degrees F in July)
- Long, cold winters (average low in January of 12 degrees F)
- Between 34-36 in. annual precipitation,
- Approx. 70 in. snow annually
- Snow cover maintained from early Dec to mid-March.

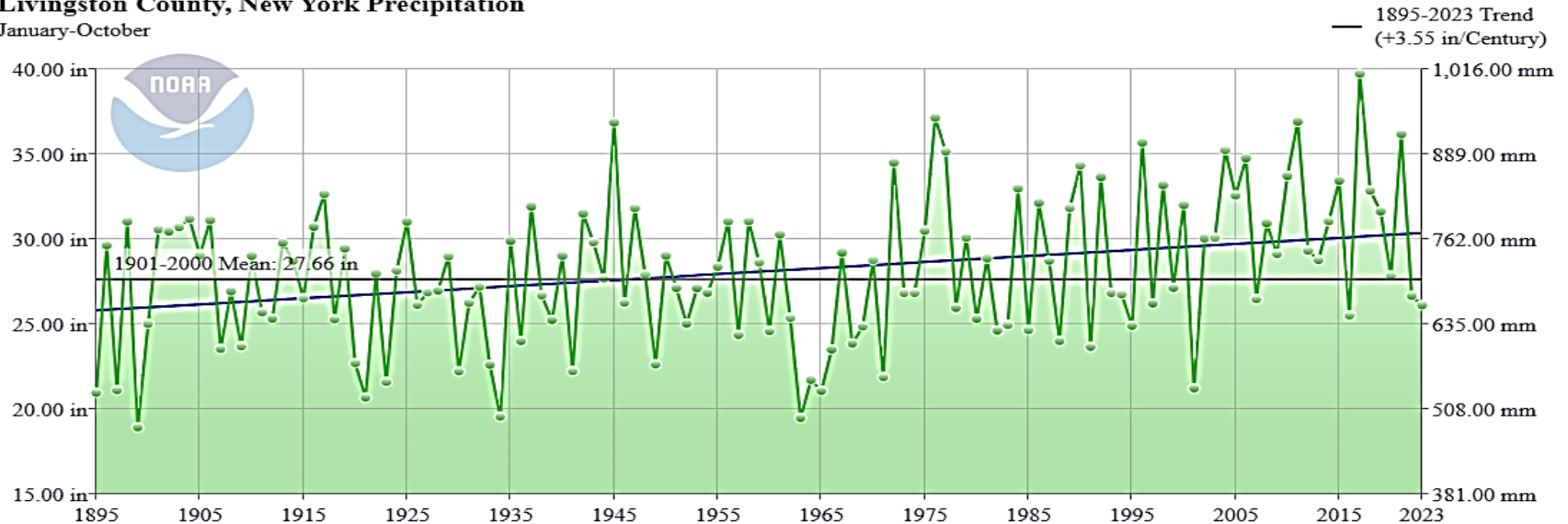


Climate

Livingston County, New York Average Temperature January-October



Livingston County, New York Precipitation January-October

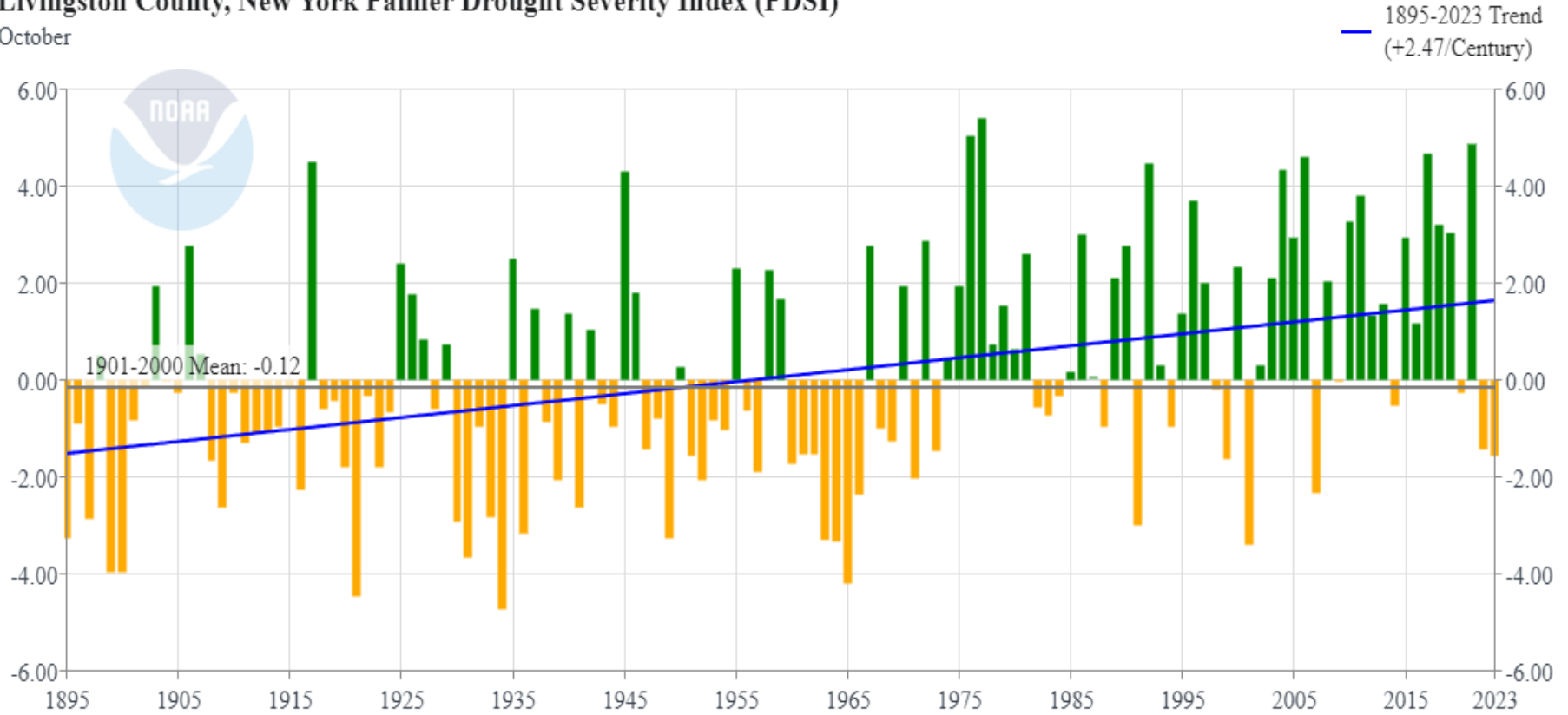


County Data come from the [U.S. Climate Divisional Database](#), which have data from 1895 to the present.

Climate

Livingston County, New York Palmer Drought Severity Index (PDSI)

October



County Data come from the [U.S. Climate Divisional Database](#), which have data from 1895 to the present.

Climate

Now/Projected

- Avg annual temp has risen 2.4 degrees in NY since 1970
- Avg annual precipitation increased with more precipitation in winter and less in summer
- Increased storm frequency and severity
- Increased heat waves, periods of drought
- Lake Erie is freezing less, increase in Lake Effect, but decreased duration of snow cover
- Increased humidity
- Climate models urge immediate action to reduce human-induced impacts on climate and to increase resiliency.



THE WAY TO GET
STARTED
IS TO QUIT
TALKING AND
BEGIN DOING.

Walt Disney



VISION

A vision statement *presents the municipality's ambition for the future. It can be a short phrase or a single paragraph that clearly describes the long-term goals, dreams, and aspirations for the city and its communities. The vision statement sets the bar high in terms of how the community wants to be perceived by the world in the future.*

A good vision statement is a self-fulfilling prophecy. When everyone shares the vision, employees will adapt the behaviors required to make the vision a reality. A vision statement's purpose is to inspire and instill passion in employees and the wider community to achieve the common vision.

VISION

Values

Our vision statement focuses attention on our values.

Identity

Our vision is descriptive, capturing the sense of who we are as a community.

Hopes

Aiming high, our vision statement reflects our aspirations.

In Reach

Our vision is believable, tangible, inspiring, and achievable.

Future

We are telling a story with a single statement and painting a picture of an ideal future.

EXAMPLES:

1. Ours is a safe, clean, friendly and prosperous community that is welcoming to visitors, with a vibrant small-town, rural atmosphere, great natural beauty and amenities that facilitate a high quality of life for residents of all ages and interests. Our town strives to be a model of contemporary small-town America, seamlessly touching the past through its rural and historic character, while actively embracing a bright future.
2. We are a vibrant, livable, and inclusive community dedicated to quality services, safety, financial strength, sustainability, preservation, and progress with equal representation for our community



STORY CUBES VISION GAME

VISIONING ACTIVITY NOTES

York in 10+ years*	A vision for the Comp Plan planning process*
<ol style="list-style-type: none">1. Many visitors come who love to walk the trails2. Flourishing, protected agricultural spaces3. Wildlife corridors & streams, scenic resources including farmland, worth driving to see.4. Protection of a network of natural cover and agriculture BMPs to reverse devastation of insects5. Sustainable land use6. Safe community to raise a family7. York is an eye-opening experience and a destination8. Small businesses are supported9. Development is viable, planful and prevents York from becoming a suburb10. Family members, young and old, stay to live, work and play	<ol style="list-style-type: none">1. We look beyond what we already know from 20062. We aim high, imagine possibilities and expand, identifying what we would like our Town to be.3. We create a plan that is connected. Connecting many aspects of people, interests, and opportunities.4. Our plan focuses on IMPLEMENTATION5. Our process and products build a sense of community, are inclusive, and people feel heard6. This plan will not sit on a shelf7. Our plan is a strong foundation that lasts for years to come and upon which we can build our community.

* Story cubes were passed around to prompt answers to the questions indicated.

Public Engagement To Do List

Town of York Comprehensive Plan Update		2023/2024											
Community Engagement Schedule		Sep	Oct	Nov	Dec	Jan	Feb	Mar	Apr	May	Jun	Jul	Sep
1	Leadership												
	Advisory Committee Meetings	20	18	15		17	21		17	15		17	18
2	Outreach												
	Advertisements, articles - Social Media, Newsletters, Pop-up events, etc.												
	Mailings/Notices												
	Develop Website (will be updated and maintained throughout)												
3	Education												
	Fact Sheet Series Development and Posting												
	Winter Webinar Series												
4	Participation												
	Public Workshops and Hearing					31							
	Stakeholder Roundtables and Interviews												
	Develop Surveys												
	Conduct Surveys												
	Opportunity for Questions/Feedback												